

ClassicCut™ CL410

Office Desktop A4 Plus Guillotine

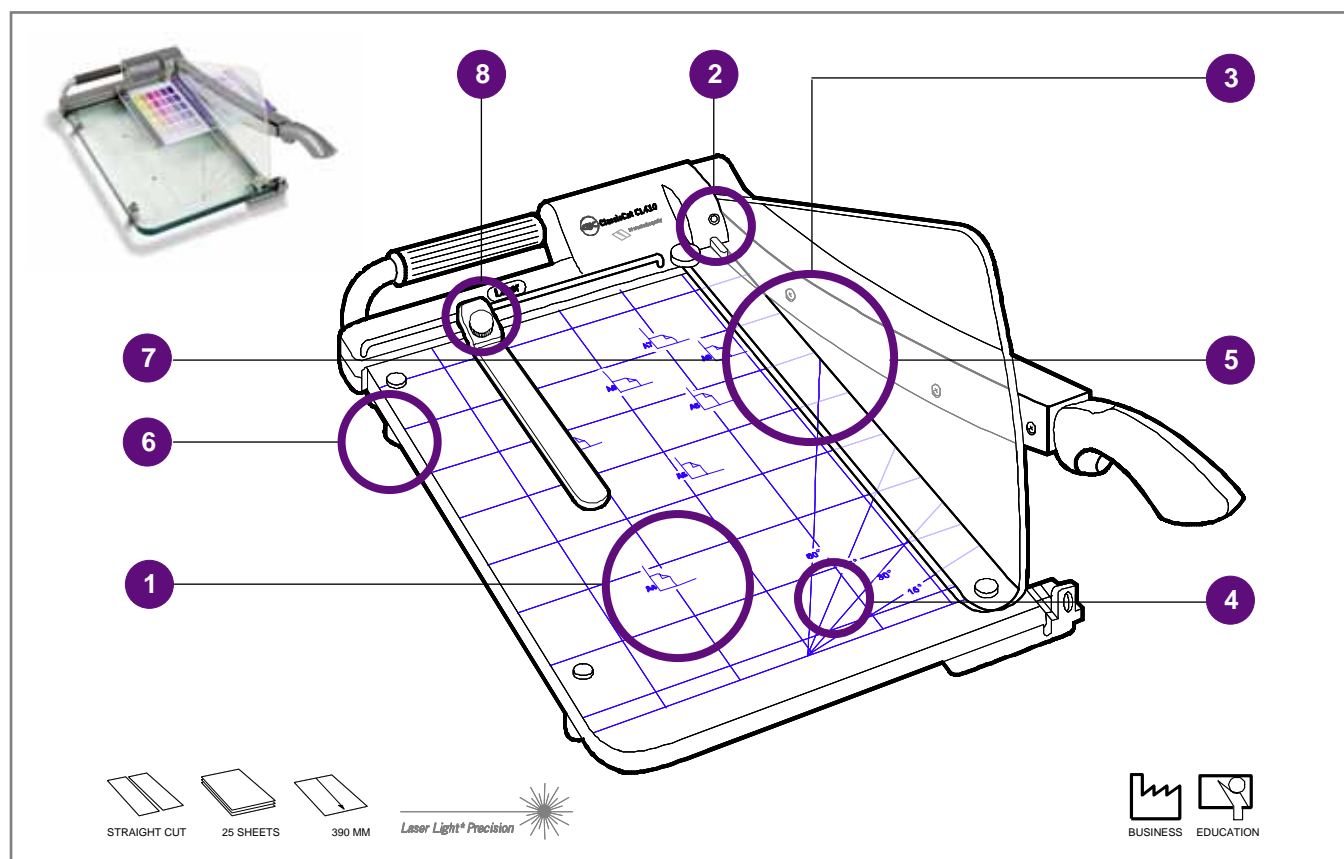
- 390 mm Trim Length – oversize A4
- 25 Sheets (80gsm) Trim Capacity*
- Laser Light Positioning System
- Stylish Heavy-Duty Acrylic Base
- Metric/Inch Rules
- Standard Paper Size & Grid Markings
- Paper Back-Stop
- Safety Guard
- Carrying Handle
- Blade-Lock
- Non-Slip Feet

* Trim Capacity strictly relates to 80 gsm Paper

Ideal for both Home/Hobby and Personal Office use.

Features & Benefits

- Paper Guides - A4, A5, A6, A7 Metric & Inch**
For ease of Paper alignment
- Laser Light Paper Positioning**
Clearly shows 'where to trim'
- See-Through Safety Guard/Manual Paper Press**
Keeps hands away from Blades
- Stylish & Durable Acrylic Base**
Looks Great & 'Takes the Strain'
- Self-Sharpening Stainless Steel Blade**
Longevity of Use
- Large Non-Slip Feet**
Absolute stability on the Desk
- 390mm Over A4 Cut length**
Ideal for Computer Paper & SRA4
- Paper Back-Stop**
Helps align paper for a more precise cut



* WARNING:
Laser light – do not stare into the beam. Class 2 laser product.

Technical Specifications

Cutting capacity	25 sheets	Back Stop	Yes
Cutting length	390 mm	Carry handle	Yes
Laser Light	Yes	Transparent Safety Guard	Yes
Paper Guides	A4, A5, A6 & A7	Warranty	2 years
Ruler in cm & inches	Yes	Weights	6 Kg
Diagonal Lines	Yes	Working Surface (LxW)	400 x 300 mm
Base Quality	20mm Heavy Duty Transparent	Machine Dimensions (LxWxH)	674 x 335 x 223 mm
Paper Clamp	Yes	Safety Approvals	TUV
Blade Lock	Yes		

GBC reserves the right to modify specifications without notice.

Product Code:
CC001215



www.gbceurope.com